

# WELL-BEING ECONOMY

## Well-Being as Wealth

Our current economy is focused on maximizing profits; we see wealth as the accumulation of money—the more we have, the richer we are. But this simplistic view of wealth is wreaking havoc on individuals, communities and the environment.

The irony is that money is simply a symbol of wealth, a means of exchange. What if we focused instead on the *sources* of our wealth: the land, water and air, our knowledge, trustworthiness and talents? We increase these "wealths" by stewarding, not hoarding. In doing so, we build a *well-being economy* where individuals, communities and the environment can thrive.



## Consultation Basics

Consultation involves both principles and process. Both are important in effective collaboration.

### PRINCIPLES

- **Oneness of humanity:** We humans are one species, one race, one human family. We are infinitely varied in our expressions—language, culture, dress and customs—but we are one people. Once we understand this, everything else flows from here.
- **Harmony and Inspiration:** Simply put, a team that respects and appreciates one another will be far more effective than one that bickers. A team whose members reach beyond themselves and are inspired by a higher vision will tap into creativity they didn't know they had.

## Neighborhood Resources

The state of today's world can feel overwhelming, but there's actually a lot we can do if we come together. This series of documents is a set of conversation starters to help neighborhoods look at their reality and form a plan of action. Every successful plan requires follow-through and that means working together. Below is a quick overview of the skills of consultation, a highly effective approach to collective action. For a more detailed explanation of these skills, check out our book:

**Collaboration Through Consultation:  
A Powerful Tool for Building Community**

- **Inner Work:** Group work is only half the equation. The other half is the inner work each of us must do individually to develop spiritual qualities such as patience, service, humility, etc.

### PROCESS

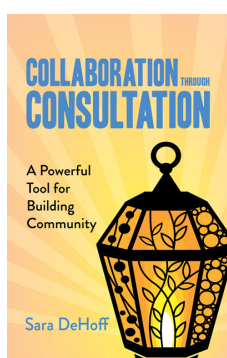
1. **Express your view:** Each participant must be free to fully express his or her viewpoint. This also means listening carefully to the views of others. You never know who will come up with the next gem of wisdom.
2. **Let it go:** Once you've stated your view, let go of it completely. Now the view belongs to the group.

3. **Seek truth:** The group then explores all the different views—sorting, sifting, combining, evaluating—to arrive at the truth of the matter.
4. **Support the decision:** Not every consultation results in a decision; sometimes the aim

is deeper understanding. If a group does make a decision, everyone supports it—whether they agree or not. If the decision is wrong, it will quickly become apparent, and a new decision can be made.

## Additional Resources

Learn more about consultation and rethinking wealth:

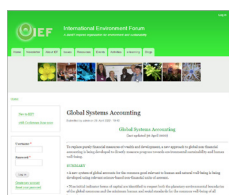


### **Collaboration Through Consultation: A Powerful Tool for Building Community**

This book provides more explanation of the principles and skills of consultation. Filled with stories, examples and practical tips, it provides the basis for the **Inspiration for Local Action** series. Find it at:

[OurProsperousWorld.com/Consultation](http://OurProsperousWorld.com/Consultation)

Sign up for our newsletter to get updates and new modules as they become available.



### **Global Solidarity Accounting**

Bahá'ís and colleagues are working on an alternative to using Gross Domestic Product (GDP) as the main measure of success. This new alternative looks at environmental and social resources as collective wealth that needs to be stewarded. Learn more at:

[IEFworld.org/accounting](http://IEFworld.org/accounting)



### **One Planet, One Habitation: A Bahá'í Perspective on Recasting Humanity's Relationship with the Natural World**

The Bahá'í International Community recently released this statement on the environment and what is needed to address the urgent issues before us. Learn more at:

[BIC.org](http://BIC.org)

If you have questions, ideas, insights, stories about using this **Inspiration for Local Action** series, please contact us at: [info@ourprosperousworld.com](mailto:info@ourprosperousworld.com). Enjoy!

## Well-Being Economy

# BUILDING THRIVING COMMUNITIES

How do we move from a focus on money to a focus on well-being? One way to shift our thinking is to imagine a positive future and start walking steadily toward it. What do we want our communities to look like?

You can use these materials individually or in a group. Perhaps you want to explore career options. Or maybe your group wants to engage in social action and you're looking for a place to begin. Either way, the process is simple:



1. **Envision a positive future:** Use the *Community Vision Questions* to fill out the *Our Community Vision* pages. Write down qualities in each area of wealth to paint a picture of a thriving community. You can pick and choose which areas to focus on and there's a blank page to create your own.
2. **Read your current reality:** Use the *Community Wealth Inventory* to rate your community in each of these areas of wealth. What does your community look like today?
3. **Where do you want to play?** Circle or color the “wealths” that most interest you. Where do you want to spend your time, talent and energy?
4. **Take action:** What can you do today to move forward? Write down your next steps below.

### Next Steps

We don't inherit the earth from our ancestors, we borrow it from our children.

~ Native American proverb

# COMMUNITY VISION QUESTIONS

In a sustainable, thriving community...



**Food:** What would food look like? For example: fresh, healthy, affordable food for everyone.



**Family:** What would a thriving family look like?



**Health:** What would health look like on all levels: physical, mental, emotional and spiritual?



**Community:** What would our relationships be like? How would we interact?



**Shelter:** What would our dwellings and work spaces look like?



**The Commons:** What would our public spaces and public assets look like?



**Air:** What kind of air do we want to breathe?



**Carbon:** What would our carbon balance look like? Is there more carbon in the air or in the ground?



**Land & Soil:** What would our gardens, fields and forests look like?



**Biodiversity:** What would our ecosystem of plants and animals look like?



**Water:** What would our lakes, rivers, streams and oceans look like?



**Transportation:** What would travel and shipping look like?



**Knowledge & Education:** What kinds of knowledge would we generate and share?



**Energy:** What kinds of energy would we use for cooking, heating, cooling and communications?



**Work & Employment:** What would our creativity, collaboration and production look like?



**The Arts:** What would our art scene look like?



**Spiritual Capital:** What qualities, values and ethics would help our community thrive?



**Fiber & Clothing:** What fibers and clothing would we produce locally?

# OUR COMMUNITY VISION

In our thriving and sustainable community, our wealth includes...



**Food**

---

---

---



**Health**

---

---

---



**Shelter**

---

---

---



**Air**

---

---

---



**Land & Soil**

---

---

---



**Water**

---

---

---



**Knowledge & Education**

---

---

---



**Work & Employment**

---

---

---



**Spiritual Capital**

---

---

---

# OUR COMMUNITY VISION

Continued...



**Family**

---

---

---



**Community**

---

---

---

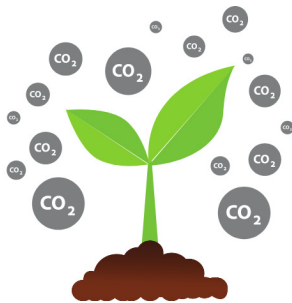


**The Commons**

---

---

---



**Carbon**

---

---

---



**Biodiversity**

---

---

---

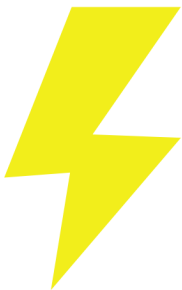


**Transportation**

---

---

---



**Energy**

---

---

---

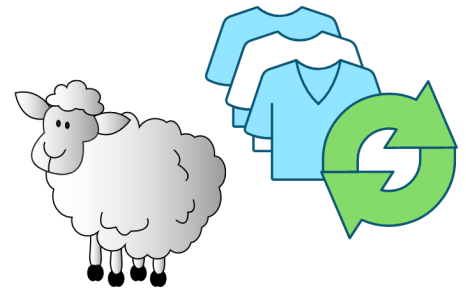


**The Arts**

---

---

---



**Fiber & Clothing**

---

---

---



# COMMUNITY WEALTH INVENTORY

How well are we currently stewarding our community's wealths?



Food



Health



Shelter



Air



Land & Soil



Water



Knowledge & Education



Work & Employment



Spiritual Capital



# COMMUNITY WEALTH INVENTORY

Continued...



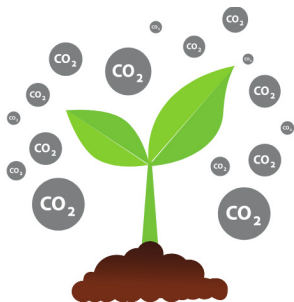
Family



Community



The Commons



Carbon



Biodiversity



Transportation



Energy



The Arts



Fiber & Clothing





# OUR COMMUNITY VISION

In our thriving and sustainable community, our wealth includes...




# COMMUNITY WEALTH INVENTORY

How well are we currently stewarding our community's wealths?

<div></div> <div>- ○ — ○ — ○ +</div>	<div></div> <div>- ○ — ○ — ○ +</div>	<div></div> <div>- ○ — ○ — ○ +</div>
<div></div> <div>- ○ — ○ — ○ +</div>	<div></div> <div>- ○ — ○ — ○ +</div>	<div></div> <div>- ○ — ○ — ○ +</div>
<div></div> <div>- ○ — ○ — ○ +</div>	<div></div> <div>- ○ — ○ — ○ +</div>	<div></div> <div>- ○ — ○ — ○ +</div>